

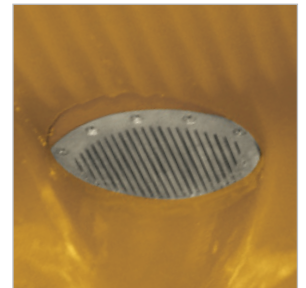
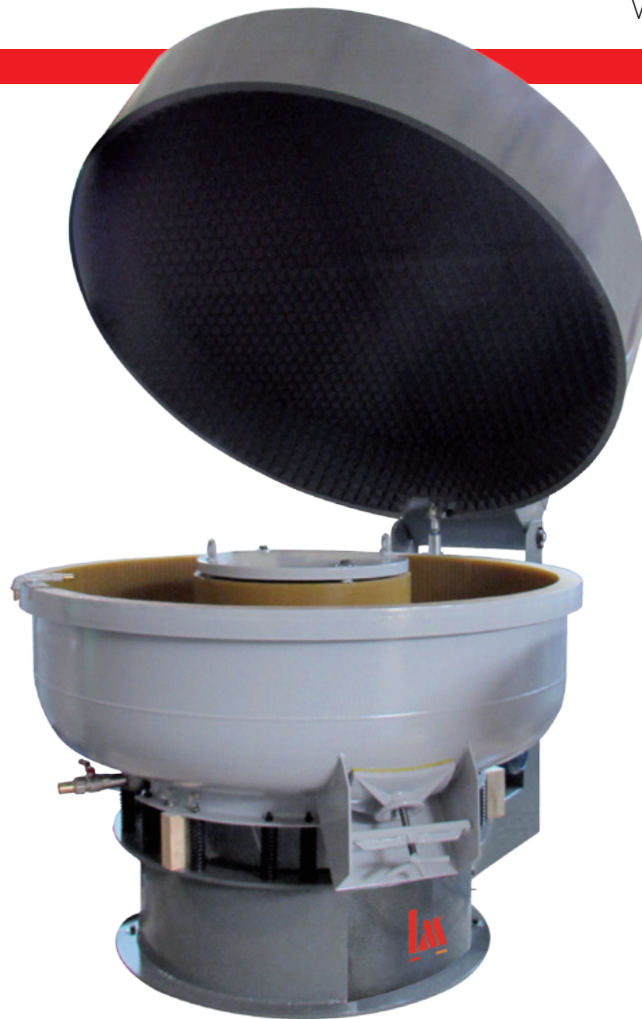
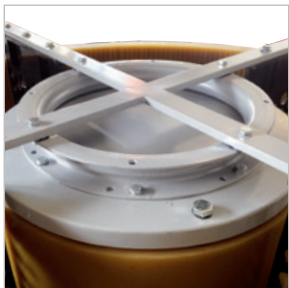


CIRCULAR VIBRATOR MOD. VBC 150/300/400/600/1100

VIBRATORE CIRCOLARE

FINISHING SYSTEMS

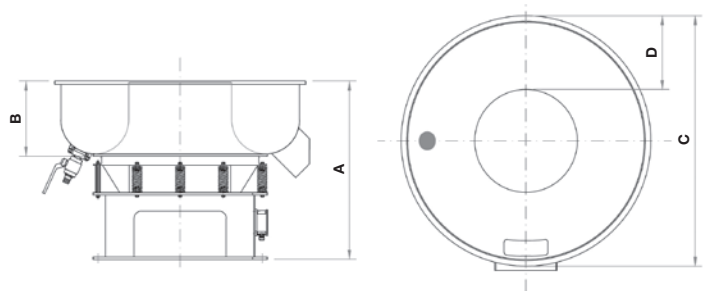
IT EN DE FR



Esempio di quadro elettrico touch screen.
Example of touch screen electrical panel.
Beispiel eines Schaltschranks mit Touchscreen.
Exemple de tableau électrique écran tactile.

TECHNICAL DETAILS

MODEL	150	300	400	600	1100
A mm	900	970	1100	1180	1180
B mm	320	380	480	500	580
C mm	980	1290	1340	1530	1680
D mm	265	345	480	440	440
CAPACITY	200 L	350 L	500 L	700 L	900 L
R.P.M.	1500	1500	1500	1500	1500
MOTOR	2.15 kW	4 kW	4 kW	7 kW	7 kW
WEIGHT	650 kg	850 kg	900 kg	1200 kg	1400 kg



Vibratori circolari adatti al settore industriale, con vasca rivestita in poliuretano antiabrasivo.

Optional:

- ▶ Variatore di velocità elettronico
- ▶ Coperchio pneumatico insonorizzato
- ▶ Pompa dosatrice
- ▶ Touch screen

Circular vibrators for the industrial sector, with anti-abrasive polyurethane coated tank.

Optional:

- ▶ Electronic speed variator
- ▶ Soundproof pneumatic cover
- ▶ Dosing pump
- ▶ Touch screen

Kreisförmige Rüttler für den Industriebereich, mit Wanne mit scheuerbeständiger Polyurethan-Beschichtung.

Optional:

- ▶ Elektronischer Drehzahlregler
- ▶ Pneumatische Schallschutzhaube
- ▶ Dosierpumpe
- ▶ Touchscreen

Vibrateurs circulaires adaptés au secteur industriel, avec cuve revêtue en polyuréthane résistant à l'abrasion.

En option:

- ▶ Variateur de vitesse électronique
- ▶ Couvercle pneumatique insonorisé
- ▶ Pompe doseuse
- ▶ Écran tactile